

Arc-Max II[®]

Installation Manual



interscan

21700 Nordhoff St.

Chatsworth, CA. 91311

U. S. A.

Phone: 818-882-2331

800-458-6153

FAX: 818-341-0642 Email: Service@gasdetection.com

Enclosed Materials:

ARC-MAX II[®] and Microscan 2000[®] Software CDs and Manuals

Software Dongle (USB Key for software)

ARC MAX II enclosure containing IN-2100-AI or IN-2100-A₁₆ input module

IN-2100-IS converter

Phone Cable with 9 Pin adapter for Com port connection



DONGLE

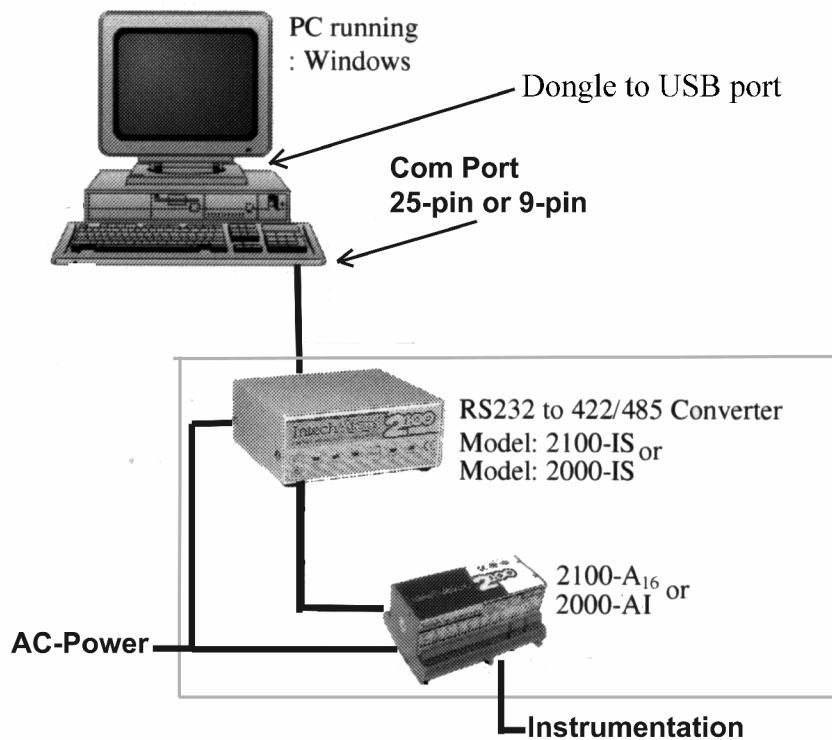
**** Do not lose Dongle or software cannot be run except in Demo mode. Loss is not covered and a new Dongle would have to be purchased.*****

HARDWARE INSTALLATION:

Refer to diagram for installation. Be sure the computer is powered down before making any connections.

Connect the 2100-IS converter phone jack labeled RS232-1 to the computer Com port via the phone cable and 9 pin adapter. Plug the green 6 pin connector extending from the ARCMAX II INTERFACE enclosure into the RS422/485 receptacle on the 2100-IS converter. Plug both the AC adapter connected to the 2100-IS converter and the AC line cord extending from the ARCMAX II INTERFACE enclosure into an AC wall outlet.

Wire the ARCMAX II INTERFACE input terminals (TBA-2) to the input source according to the wiring diagram at the back of this manual. Do not connect the USB dongle at this time. This will be done later after the software installation.



Software Installation:

NOTE: For systems provided with a PC, all software has been pre-installed and the following steps can be skipped. The Microscan and ARCMAX programs should auto-start when the PC is booted up. For pre-installed software configurations, be sure to plug in the license DONGLE prior to starting the computer.

To install software on an existing computer, follow the steps outlined below.

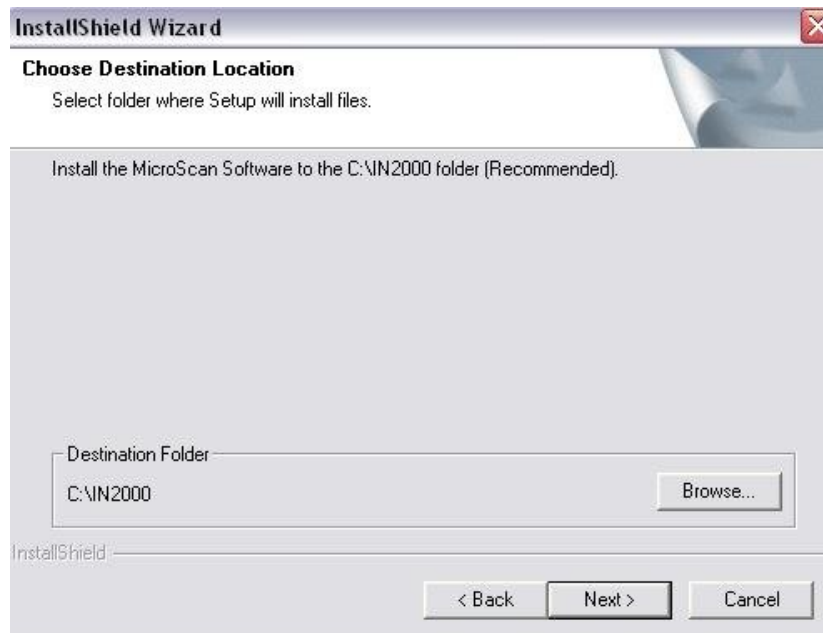
Turn on computer and allow windows to start. Insert the MICROSCAN 200 AND ARCMAX INSTALLATION CD into the CD drive and close door. An installation window labeled 'Intech Instruments Ltd.' shown below should open after a few moments.



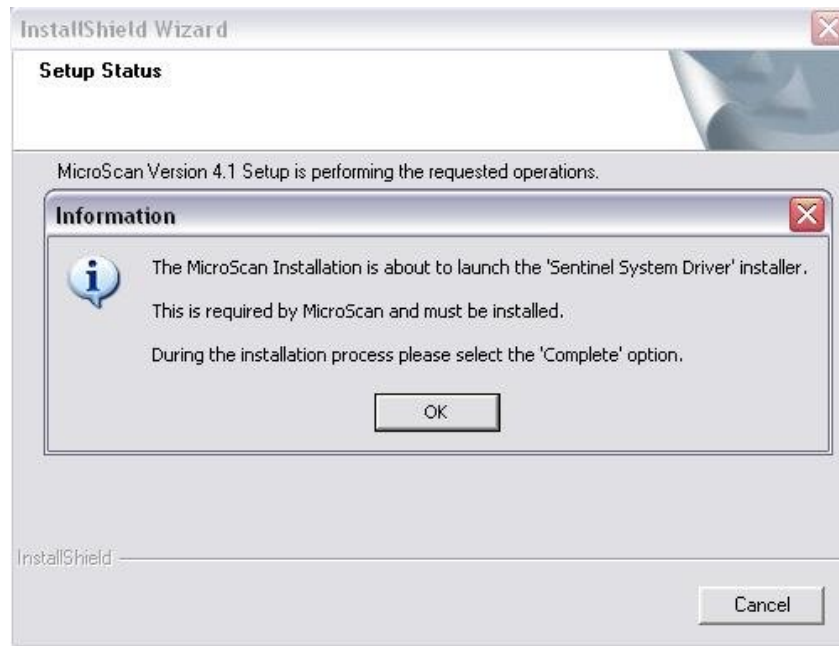
NOTE: If auto start is not active for your CD drive, the program will have to be started manually. This is done by selecting "START" from the task bar. Then click "run". The following window will appear:



In the 'Open' field, enter the text "d:\CDintech.exe" as shown above but substitute the letter of your CD drive for 'd'. Click on OK and the installation window will open. Once at the 'Intech Instruments Ltd' installation screen, click on Microscan V5. The installation wizard will open. Click next. The "license agreement" window will open. Read this agreement and click Yes to advance to the "Choose Destination Location" window shown below.



Click Browse then enter C:\IN2000 in the "Path" field, click OK then click Next. The next series of screens will show which components will be installed. Click Next through each of these 2 screens. The installation process will then begin. After a few seconds the following window should appear:



Click OK to launch the Sentinel System Driver installer. At the installer wizard window, click on Next. A new 'license agreement' window will then open as shown below.



Read this agreement, click the 'I accept the terms in the license agreement' button then click Next. The 'Setup type' window will now open. Make sure the Complete option button is selected then click Next. The window that follows will instruct you to "remove all USB SuperPro Keys before continuing". Make sure the USB dongle has not been connected yet to the USB port then click Install. At the end of the installation, an 'Installation complete' window will appear. Click Finish to complete the install of the Sentinel Install Driver. The

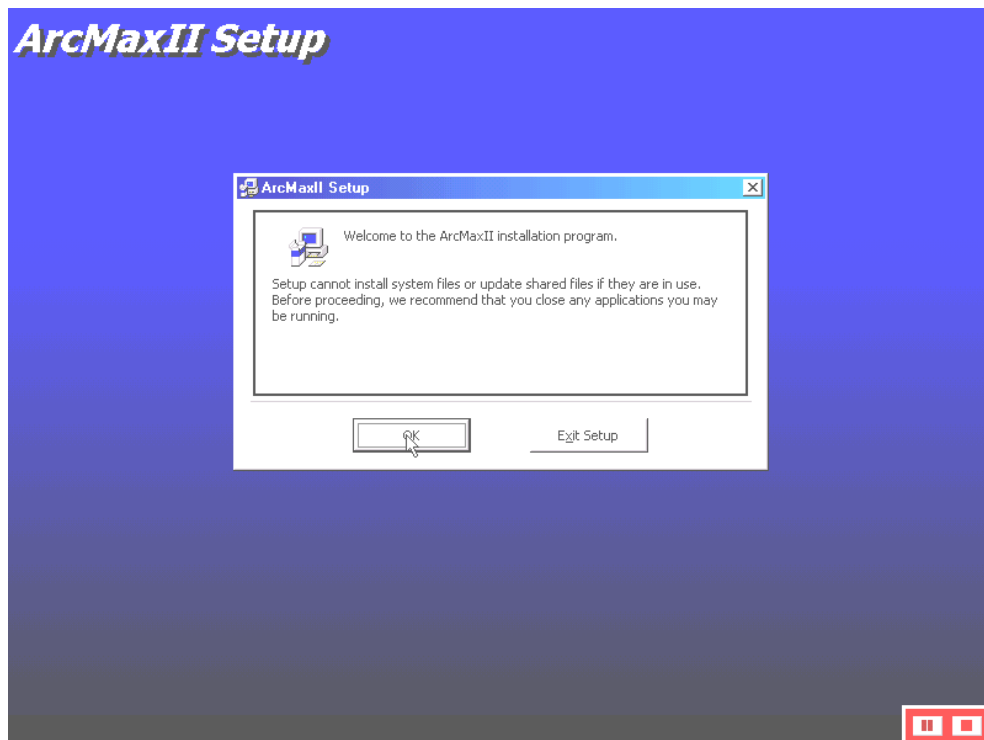
Microscan install will then finish and its “Installation complete” window will appear. Click Finish to complete the Microscan installation. When finished, the following message will appear.



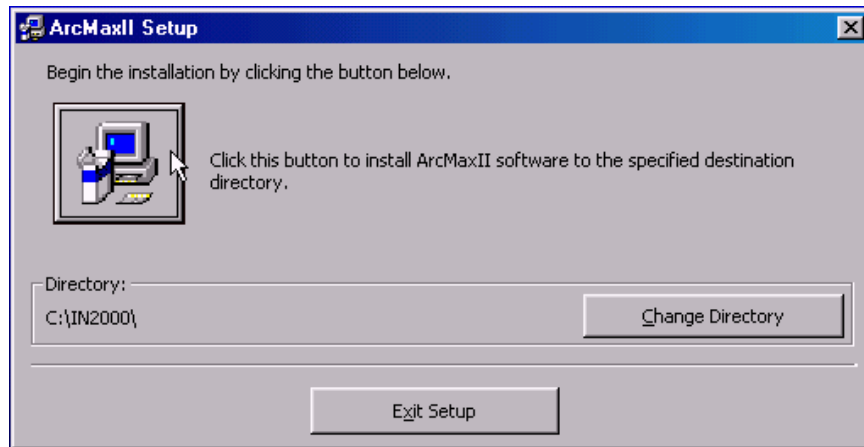
Connect the dongle to the USB port and click OK. In the ‘Intech Instruments Ltd’ window, click on Exit. NOTE: If the window above does NOT appear, simply connect the dongle to your USB port after closing the MICROSCAN startup window.

Next, load the ARCMAX program by opening the startup file located in the folder titled “ARCMAX” on the ARCMAX install CD. Open Windows Explorer, highlight your CDROM drive, then highlight the folder and file mentioned above. Double click the file titled Setup.exe.

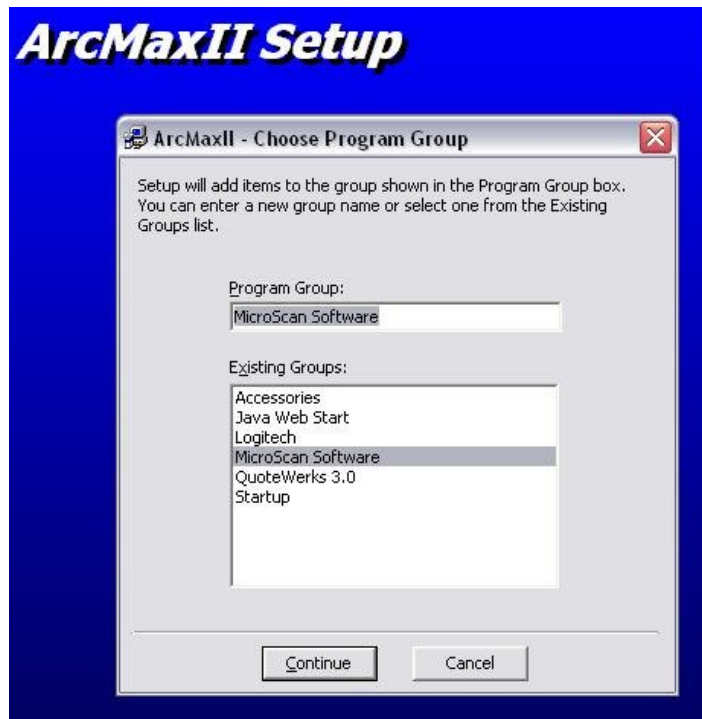
The window shown below should now open. Click OK.



The ArcMaxII Setup window will open. Click on the button above the directory name as shown below. It is recommended that the default directory be used.



A 'Choose Program Group' window will now appear as shown below. Make sure MicroScan Software appears in the 'Program Group' field and MicroScan Software is highlighted in the 'Existing Groups' field. Click Continue to proceed.



The installation will now begin during which you might see a number of 'Version Conflict' windows similar to that shown below. Each time this window pops up, click Yes.



When installation is complete, a completion message will pop up. Click on the OK button.

Once ARCMAX is installed, the next step is to copy the ARCMAX setup file to your hard drive. This file is titled “arcmxii.mdb” and is on the ARCMAX installation CD in the folder titled “ARCMAX”. (in some cases the file may have a slightly different prefix but the extension will ALWAYS be .mdb) Open Windows Explorer, highlight your CDROM drive, then open the folder mentioned above. Highlight the .mdb file, press and hold “Control” then press “C” to copy this file. Now highlight your C drive and then the folder named “IN2000”. Press and hold “Control” then press “v” to paste this file into the IN2000 folder. THIS FILE MUST GO INTO THE IN2000 FOLDER FOR THE SETUP TO WORK. If you get a message stating that this file already exists and asking if you want to overwrite it, click Yes.

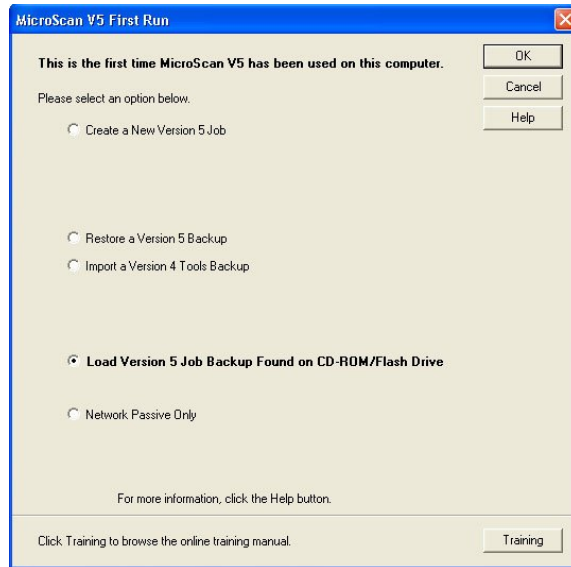
Remove the Microscan disk from the CD drive and restart your computer to ensure proper loading of the USB driver.

STARTING MICROSCAN:

Once your computer is restarted, re-insert the ARCMAX install CD then double click on the Microscan startup icon pictured below to start the program. (If the MICROSCAN startup window opens, simply click “EXIT” to close it.)

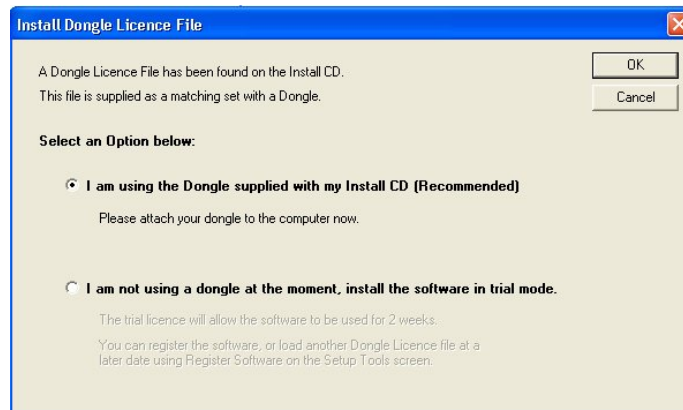


A window titled “Microscan V5 First Run” will open as shown below.



Make sure “Load Version 5 Job Backup Found on CD ROM/Flash Drive” is selected then click OK. The job setup will begin loading. When finished, a confirmation window will open. Click OK to complete the job restore.

At this point, the MICROSCAN program will finish loading. The “Install Dongle Licence File” window shown below will appear.

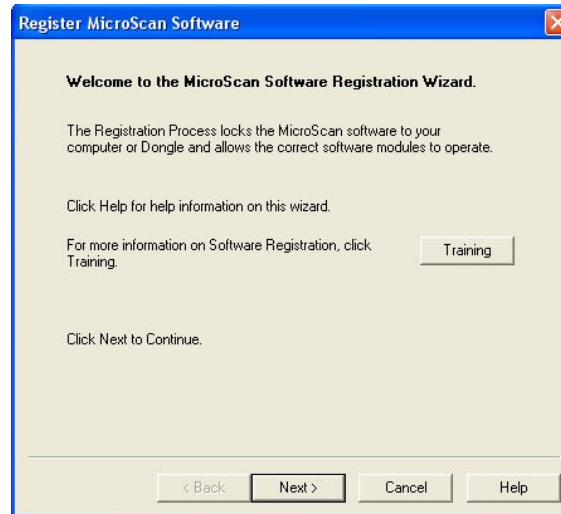


Make sure “I am using the Dongle supplied with my Install CD” is selected, then click OK. This license will load from the CD and the startup will be complete.

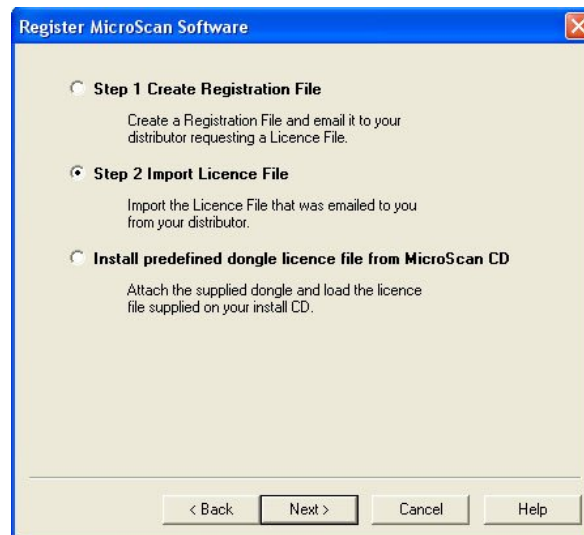
NOTE: If after a few moments you see a message indicating that the dongle could not be found or that the license has expired, you will need to manually import the dongle license file from the CD as directed in the section below. If such a message does not display, remove the CD from the drive. Installation is complete.

IMPORTING THE LICENSE FILE:

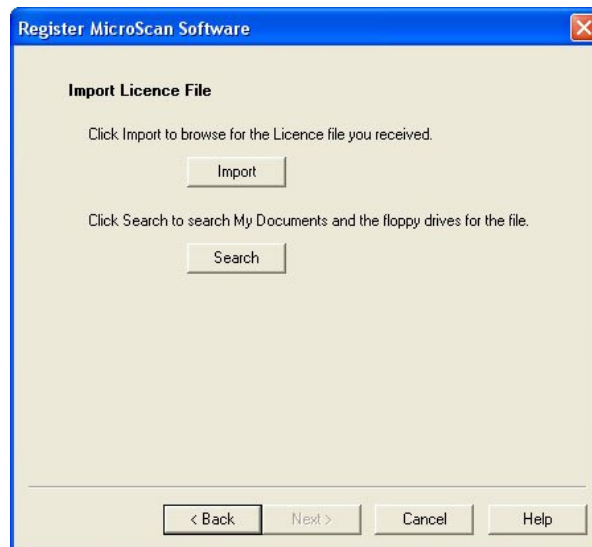
Click on “Setup Tools” in the left side navigation tree. Click on “Enter Access Code” in the main window. In the popup window that appears, type “setup” in the PASSWORD field. Now the full setup tools menu should be displayed. Under “System Settings” click on “Register Software”. The next series of screens and instructions are shown below.



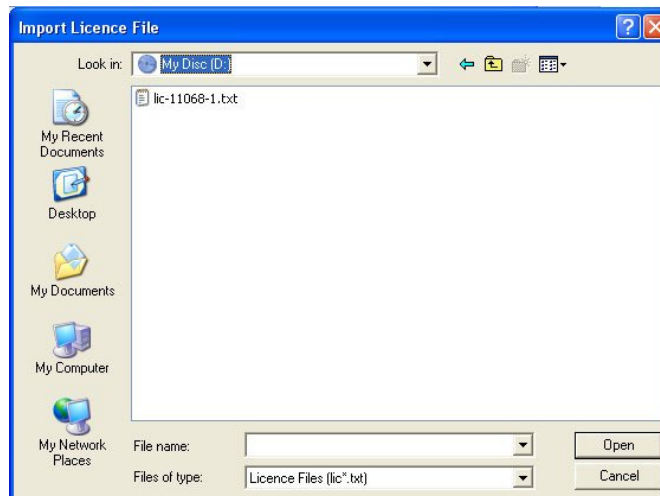
Click “Next”



Make sure “Step 2 Import License File” is selected then click “Next”.



Click "Import"



In the "Look In" window, select your CDROM drive, then highlight the txt file like the one shown above. Click "Open". As the program looks for the file and processes it, a temporary screen will open. **DO NOT CLICK ANY BUTTONS ON THIS SCREEN!** Wait until the screen below is shown.

SYSTEM PASSWORDS:

Passwords are required to access certain areas of the Microscan system. For example, when closing the program, a password is requested.

System Passwords are found in system setup under system passwords. Initial passwords are as follows:

systemclose	- Exit (Close Microscan System)
setup	- Setup Manager Startup Password.
prog	- Show Program Manager
file	- Show File Manager
print	- Show Print Manager
runmenu	- Show Autoloader Menu

ARC-MAX II[®] is also password protected. Level 1 allows users access only to viewing. Level 2 grants access to all other functions except changing passwords. Level 3 is Administrative and allows full access. Passwords for lower levels should be entered after using Level 2 or 3. Initial settings are as follows:

Level1 Password	- Level1
Level2 Password	- Level2
Level3 Password	- Level3.

You can view the default passwords and procedures for changing them by clicking on "HELP" and selecting "Microscan Passwords".

ARC-MAX II Installation Manual.doc